

105 FIRE DEPARTMENT ESTABLISHMENT

ESTABLISHMENT:

The Florence Township Board of Fire Commissioners of the Florence Township Fire District Number 1 does:

Formally establish The Florence Township Fire Department within the corporate boundaries of the Township of Florence.

Formally establish the Board of Fire Officers within the Florence Township Fire Department as is enumerated in **Section 205** hereof.

The Florence Township Fire Department consists of three (3) Fire Companies, numbered according to the age of each company as No. 1 Fire Company, No. 2 Fire Company and No. 3 Fire Company, as at present constituted and existent in said Fire Department, together with any additional fire organizations or Fire Companies as may hereafter become duly constituted.

The duties, membership requirements and operational guidelines for the Florence Township Fire Department are set forth in the Standard Operating Procedures as established by the Florence Township Board of Fire Commissioners.

VISION:

The Florence Township Fire Department a proactive planning organization providing Fire and Life Safety services for the growth of our protected area. This is accomplished through integrating Fire Suppression, Hazard Mitigation, and Emergency Services activities. In addition, constantly striving to provide the best Fire and Emergency services to our community and neighbors.

MISSION:

The Florence Township Fire Department provides efficient and effective fire suppression, hazard mitigation, and emergency services to our community and neighbors through efficient and financially responsible programs. These programs include, but are not limited to:

- Quick and efficient fire suppression services.
- Hazard identification and mitigation services.
- Fire Prevention through code enforcement, public education, and fire investigation services.
- Emergency medical services.

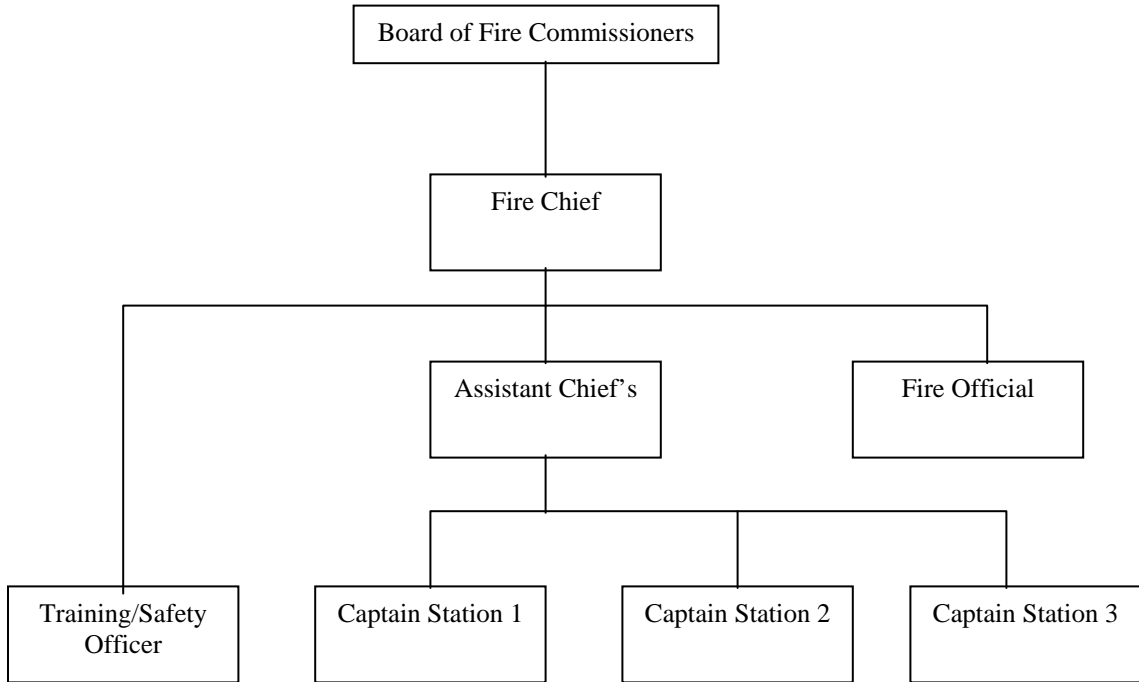
These services are delivered with highly motivated, team oriented personnel, trained and certified, using the best resources available.

100-105-01 (6-02)

ORGANIZATIONAL CHART:

An organizational chart showing the major management levels within the Florence Township Fire Department shall be adopted.

The personnel appointed and/or elected to fill the positions within the organizational chart shall meet the requirements as outlined in Section 320.



100-105-02 (6-02)